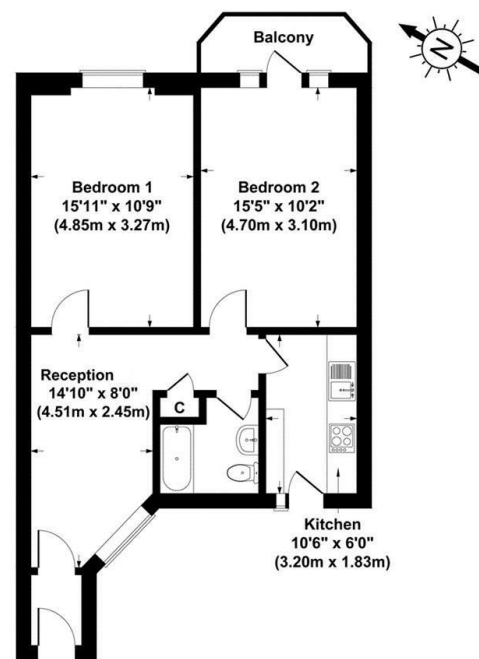




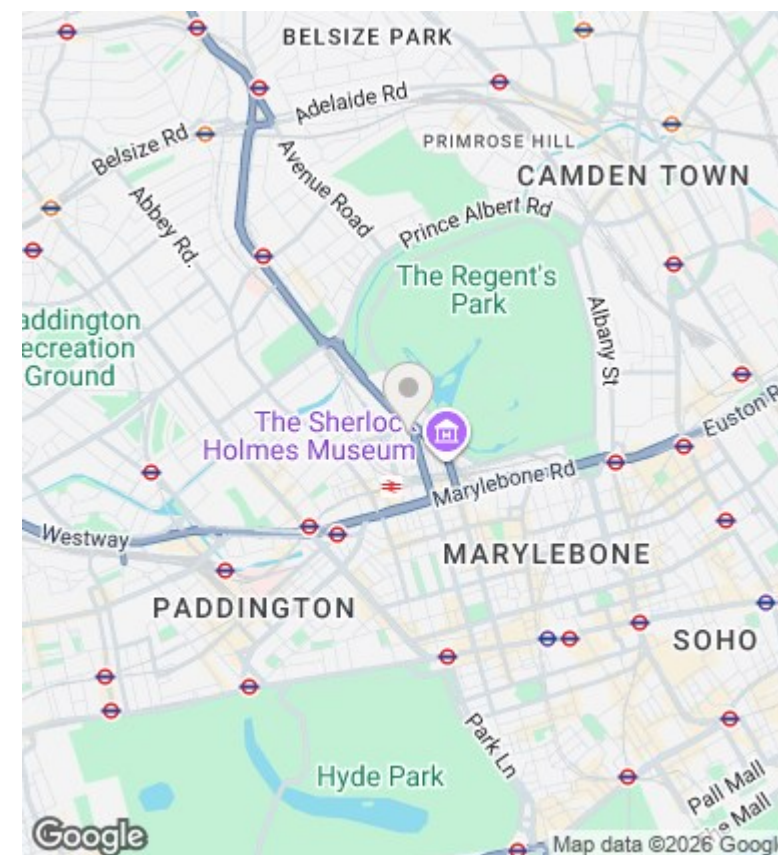
Ivor Court, Gloucester Place, London NW1

Prices From £600,000

- Share of Freehold
- Fully tiled bathroom
- Close to The London Business School, Regent's Park, and Baker Street's amenities and travel connections
- Two double bedrooms with picturesque views of Regent's Park
- 24-hour porterage
- Separate kitchen featuring a breakfast bar
- 2 x Lifts



Ivor Court, London, NW1
Gross Internal Area 624 sq ft / 58 sq metres
 Not to Scale. Produced by The Plan Portal 2023
 For Illustrative Purposes Only.



Directions

Viewings

Viewings by arrangement only. Call 02070990800 to make an appointment.

Council Tax Band

D

EPC Rating:

C

Energy Efficiency Rating		
	Current	Potential
Very energy efficient - lower running costs		
(92 plus) A		
(81-91) B		81
(69-80) C	70	
(55-68) D		
(39-54) E		
(21-38) F		
(1-20) G		
Not energy efficient - higher running costs		
England & Wales	EU Directive 2002/91/EC	